

JUNE 2014



Exploring Australia's Premier Uranium District

Disclaimer and Competent Person's Statement

❑ Forward Looking Statements

This Presentation may include statements that could be deemed “forward-looking statements”. Although the Company believes the expectations expressed in such forward-looking statements are based on reasonable assumptions, such statements are not guarantees of future performance and actual results or developments may differ materially from those expected in the forward-looking statements or not take place at all.

❑ No offer to sell or invitation to buy

This Presentation is not, and should not be considered to, constitute any offer to sell, or solicitation of an offer to buy, any securities in Uranium Equities Limited, and no part of this Presentation forms the basis of any contract or commitment whatsoever with any person. Uranium Equities Limited does not accept any liability to any person in relation to the distribution or possession of this Presentation from or in any jurisdiction.

❑ Disclaimer

Whilst care has been exercised in preparing and presenting this Presentation, to the maximum extent permitted by law, Uranium Equities Limited and its representatives:

- make no representation, warranty or undertaking, express or implied, as to the adequacy, accuracy, completeness or reasonableness of this Presentation;
- accept no responsibility or liability as to the adequacy, accuracy, completeness or reasonableness of this Presentation; and
- accept no responsibility for any errors or omissions from this Presentation.

❑ Receipt of this Presentation

If the recipient of this Presentation has signed any confidentiality or similar agreement covering information of the type herein contained, then the Presentation and all information therein is received subject to that agreement(s).

❑ Competent Person Statement

The information in this presentation is extracted from the ASX Announcement entitled 'Uranium Equities Adds to NT Uranium Portfolio' created on 16th June, 2014 and is available to view on www.uel.com.au. The company confirms that it is not aware of any new information or data that materially affects the information included in the original market announcement and that all material assumptions and technical parameters underpinning the estimates in the relevant market announcement continue to apply and have not materially changed. The company confirms that the form and context in which the Competent Person's findings are presented have not been materially modified from the original market announcement.



Alligator Rivers Uranium Field (ARUF)

the place to discover high grade uranium deposits

- **ARUF:** A world-class uranium province
 - >500Mlb endowment

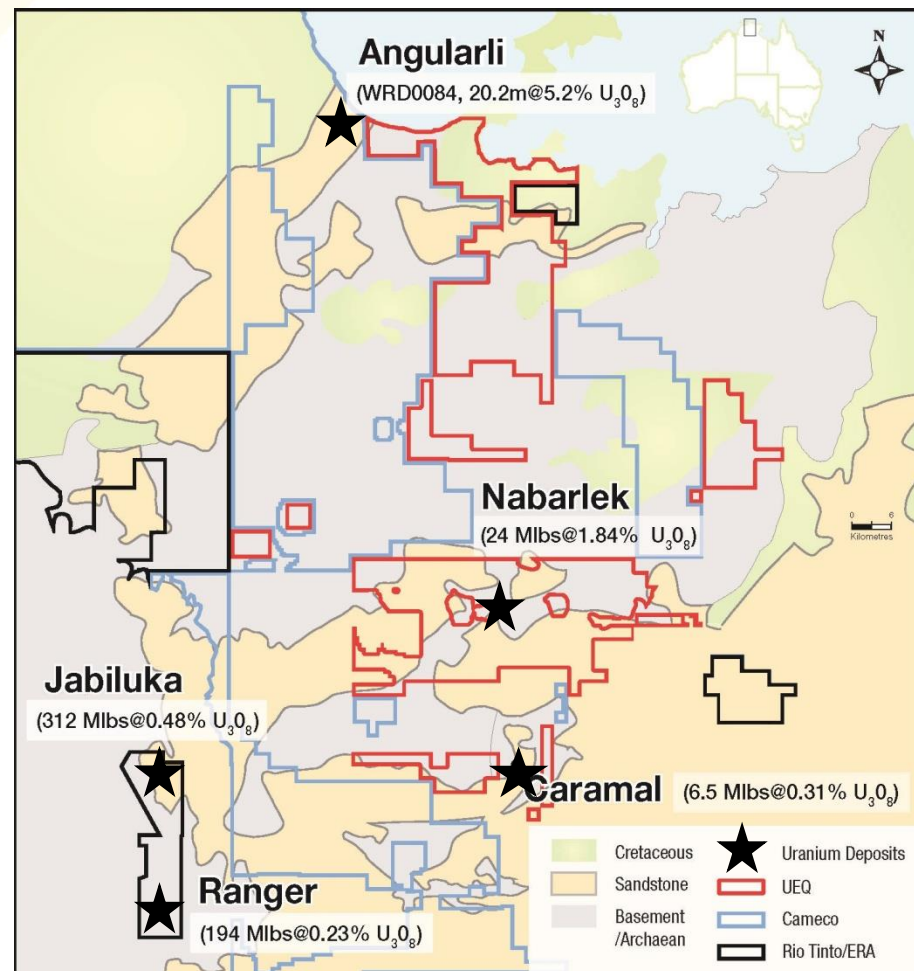
- **Angularli: New Cameco Discovery**

A developing opportunity extending the prospectivity of the ARUF

- **UEQ Extends its Ground Position**

Purchase of Arnhem Minerals Pty Ltd

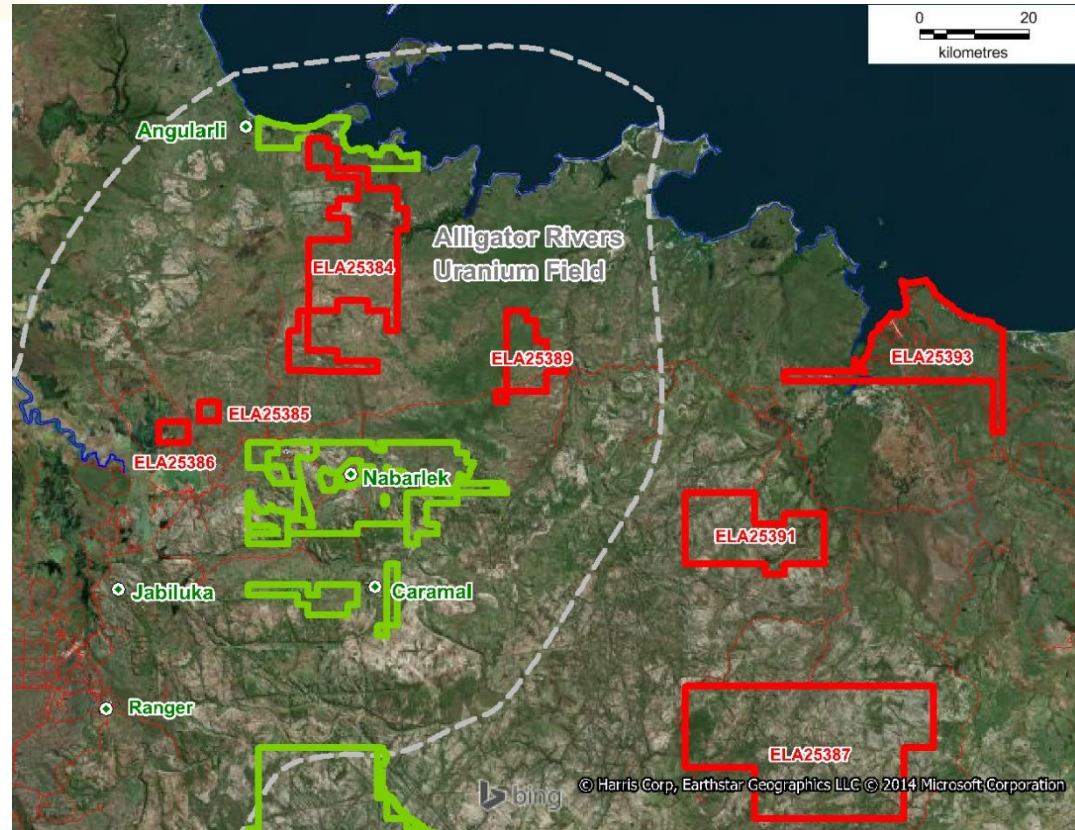
- Readily accessible areas
- Evolving geological models
- Positioning the Company for a discovery



Acquisition of Arnhem Minerals

UEQ has a dominant position in the ARUF

- On June 16th UEQ announced it had agreed to purchase Arnhem Minerals from Spectrum Rare Earths (ASX: SPX)
- >2000km² of accessible exploration land
- Initial Payment of \$325k
- \$175k payable on grant of first tenement
- \$125k payable on grant of second tenement



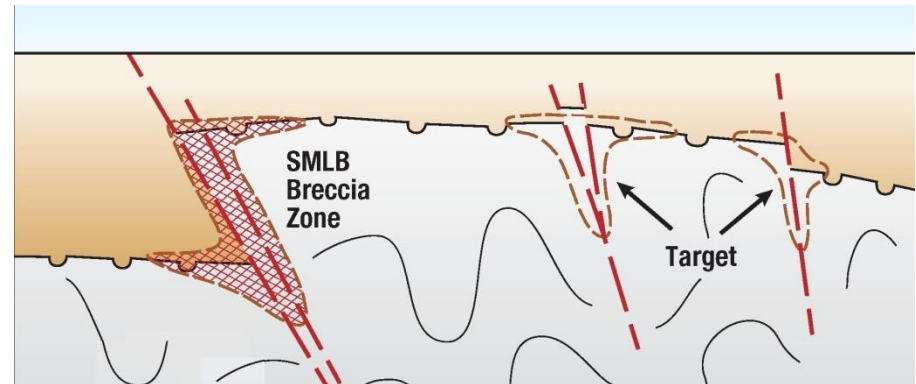
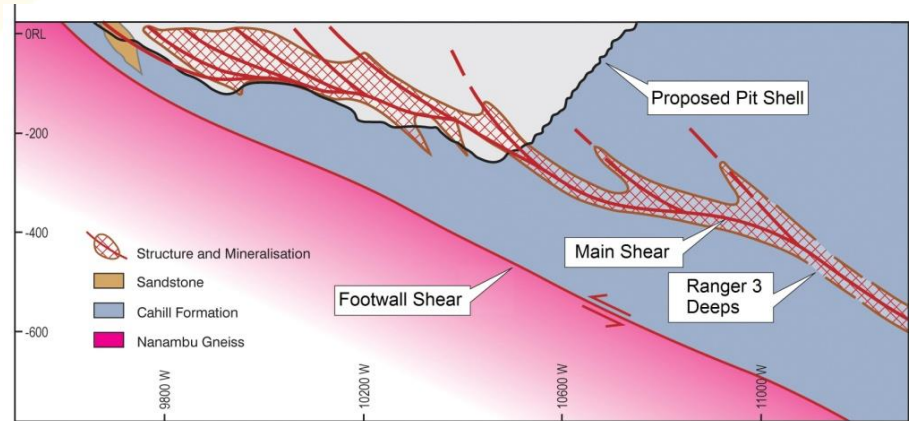
Alligator Rivers Uranium Field showing Arnhem minerals tenements in Red. The Arnhem Minerals tenement package contains a number of high tenor radiometric anomalies that are inadequately explored.



Alligator Rivers Uranium Field

Evolving geological understanding

- Shear-hosted (Ranger, Jabiluka)
 - Mineralisation controlled by shallow dipping shears in close proximity to granitic basement
 - High tonnage deposits
- Reverse Fault-hosted (Nabarlek, SMLB, Angularli(?))
 - Mineralisation controlled by reactivated faults offsetting the unconformity
 - High grade deposits



Alligator Rivers Uranium Field

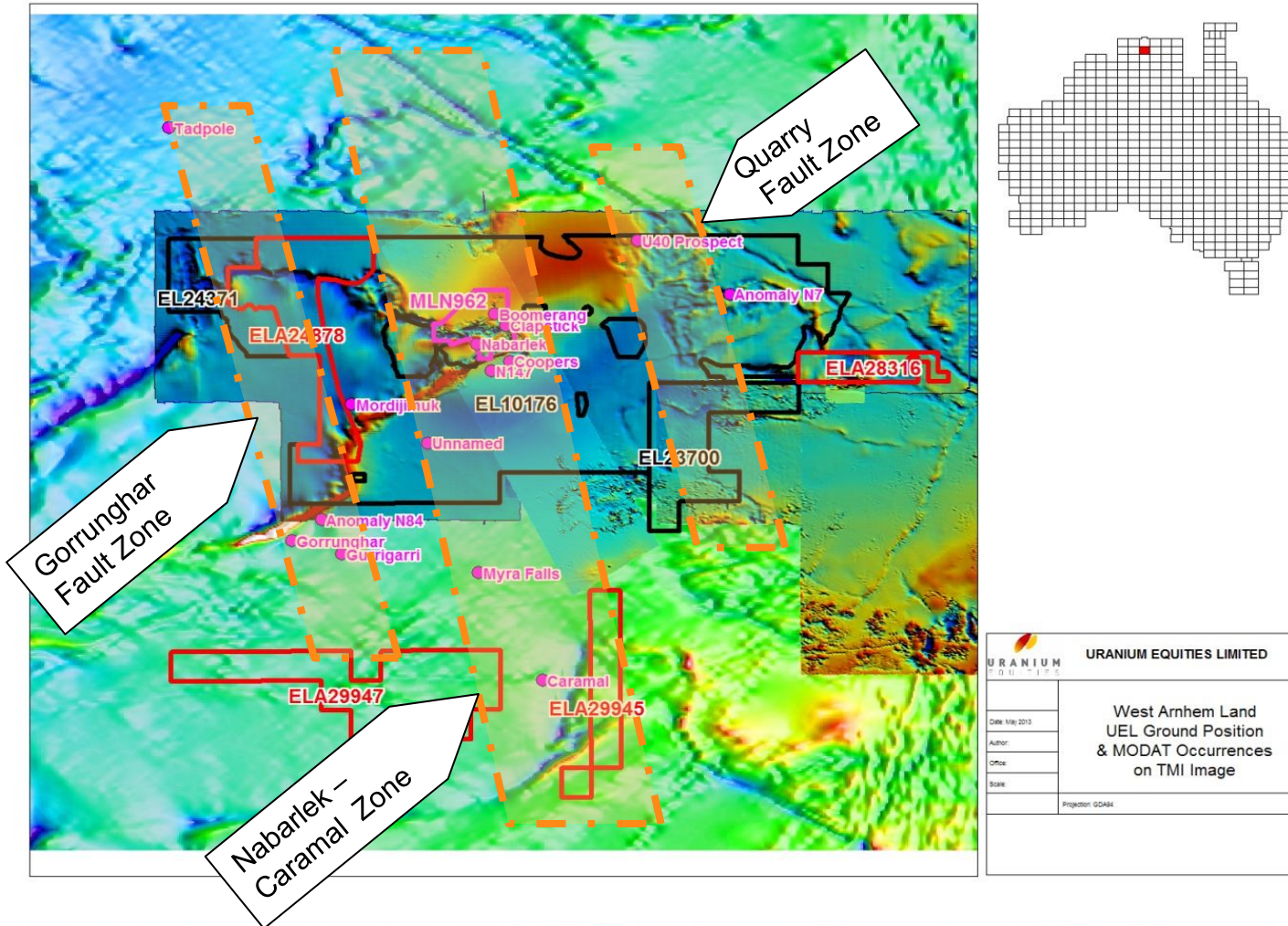
2014 Exploration Drilling

- 5000m RC drilling program:
 - U40 and U40E – Following-up untested radon anomalies adjacent to known high-grade uranium intersections;
 - Coopers Extension – Structural offsets from mineralisation intersected to date
 - Coopers South – Significant untested uranium regolith geochemical halo
 - Nabarlek Deeps – Structural extensions of Nabarlek mineralisation, below a barren intrusive dolerite sill
 - Monolith Target – Regional mapped quartz breccia zone – not targeted in previous work



Nabarlek

Three important structural corridors



This is a false-color satellite image, likely from a thermal or night-vision sensor, showing a coastal or urban area. The image is overlaid with a color scale ranging from blue (cooler) to red and yellow (warmer). Two large white arrows labeled "Target" point to specific locations in the lower half of the image. A small inset image in the upper left quadrant shows a detailed view of a building complex with red markers and labels. Various alphanumeric codes are scattered across the image, possibly identifying specific features or locations.

Significant radon anomalies, no effective drill test



Nabarlek – U40

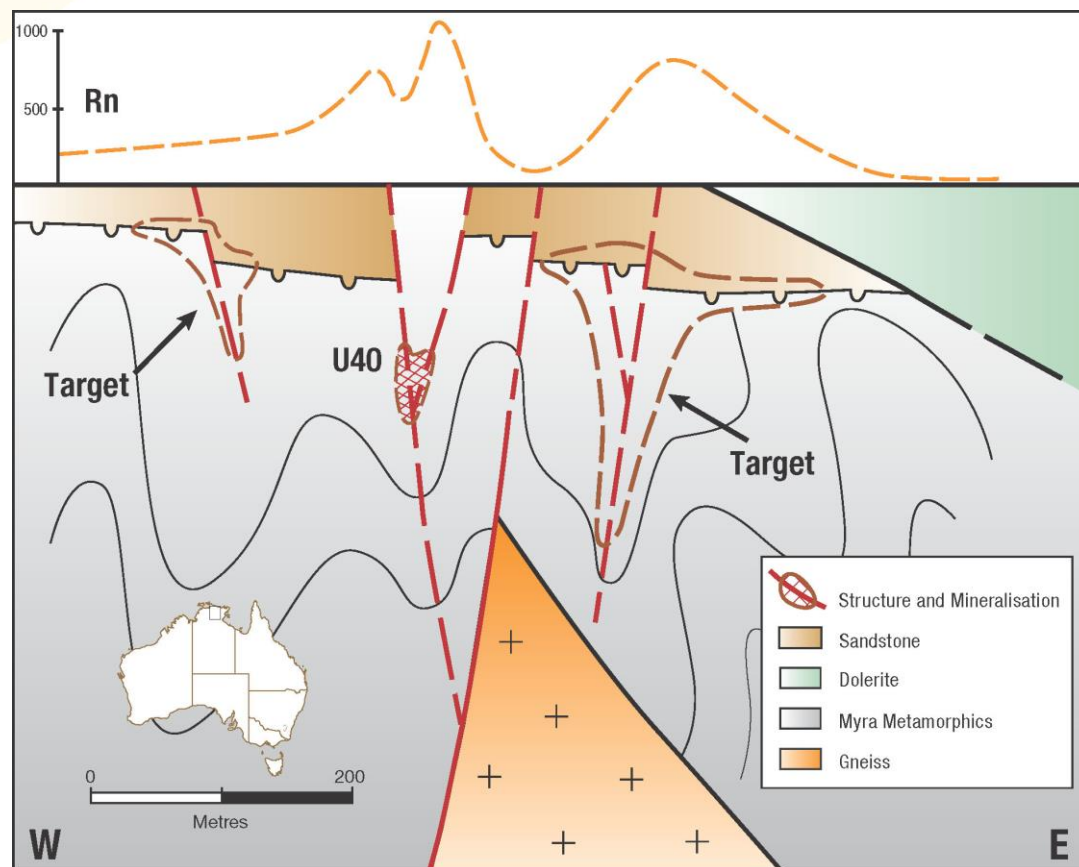
Mineral system with potential to produce high grade uranium resource

Previous Drilling included:

NAD7492

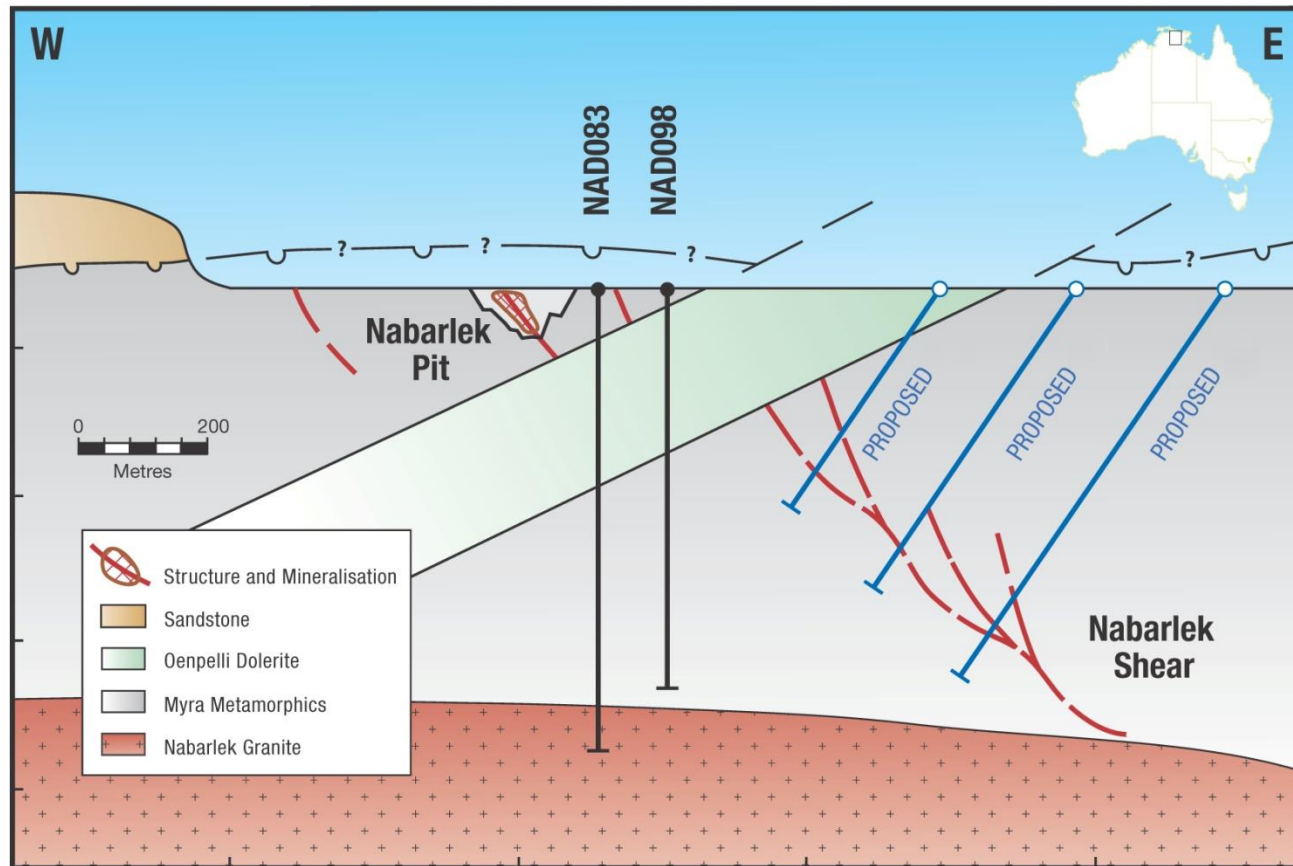
6.8m @ 6.71 % U_3O_8 from 75m
7.3m @ 1.68 % Cu from 74.5m
4.5m @ 0.91 ppm Au from 76.5m
1.5m @ 0.54 ppm Pd & 0.24 ppm Pt from 78.5m

- Radon anomalism adjacent U40 with un-tested unconformity target beneath sandstone cover
- 20km of Quarry Fault Zone yet to be drill tested.



Nabarlek Deeps

- Extension of SMLB structure (a known mineralised structure) beneath the historical Nabarlek Pit



Investments

PhosEnergy Limited

- 3 million shares in PhosEnergy Limited retained on demerger of PhosEnergy assets in September 2013

Enterprise Uranium Limited (ASX:ENU)

- 10.49% interest acquired as part consideration for sale of Energia Minerals Limited shares in October 2013



Corporate Snapshot

Highly leveraged to exploration success

Capital Structure

| | |
|---------------|--------------------|
| Shares | 304M |
| Fully diluted | 306M |
| Market Cap | \$3.6M (at 1.2c) |
| Cash | \$0.9M (at 31 Mar) |

Major Shareholders

| | |
|-----------------------|-------|
| Directors | 18.1% |
| Tim Goyder (Director) | 17.5% |
| Calm Holdings | 4.4% |
| Resolute Mining | 3.7% |
| Top 20 | 55% |

Major Shareholdings as at 21 August 2013

Board

| | |
|----------------|--------------------|
| Tim Goyder | Executive Chairman |
| Bryn Jones | Non Exec Director |
| Richard Hacker | Non Exec Director |

Management

| | |
|------------------|------------------------------|
| Rolf Heinrich | CFO & Company Secretary |
| Grant Williamson | Manager Geology, Exploration |

